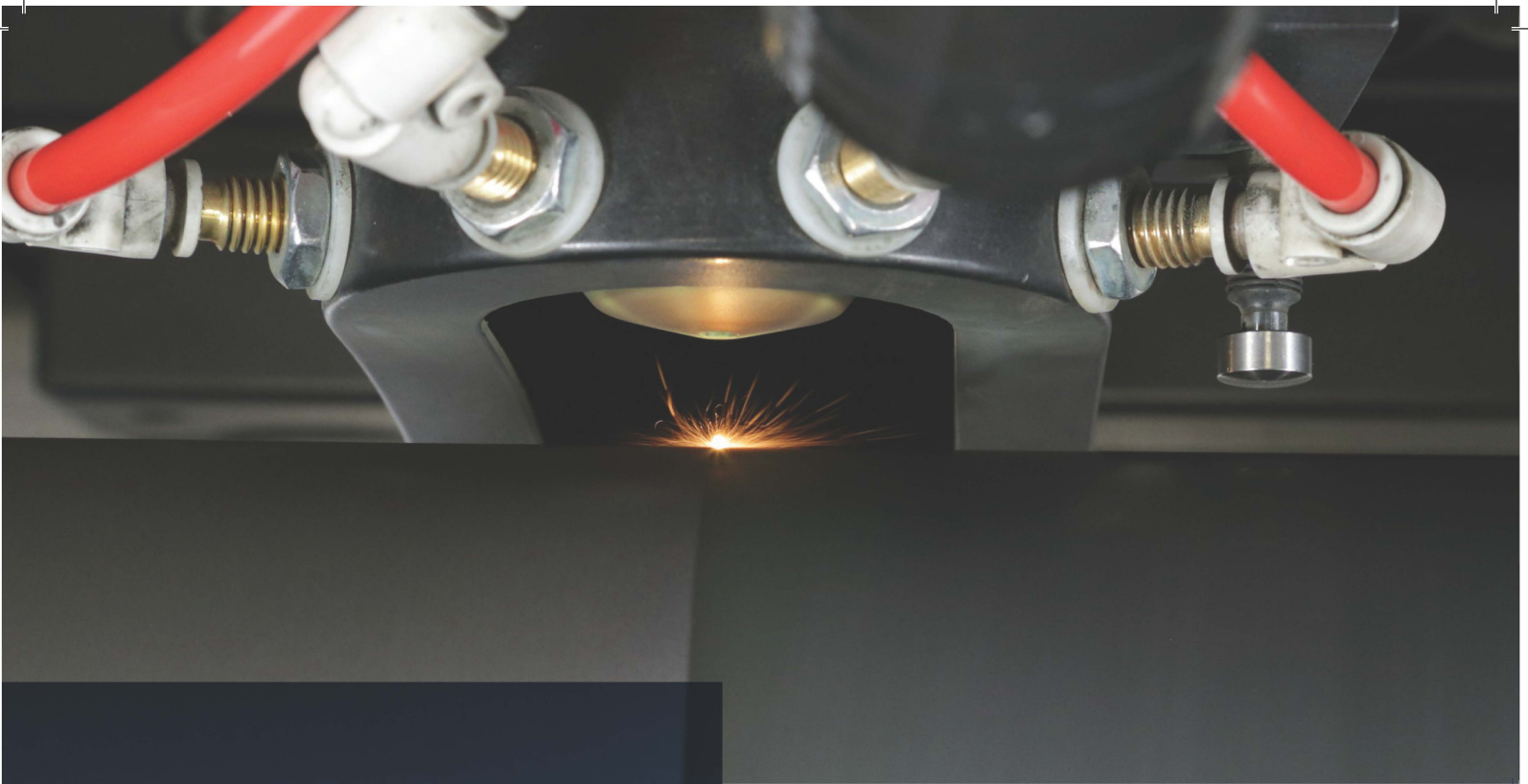




■ [pamarco.com](https://pamarco.com)  
■ [info@pamarco.com](mailto:info@pamarco.com)

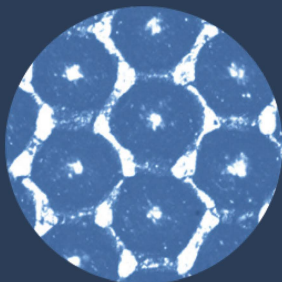
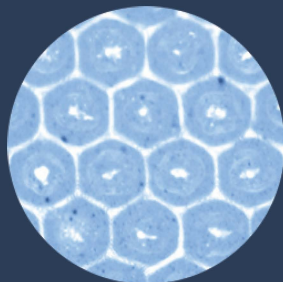
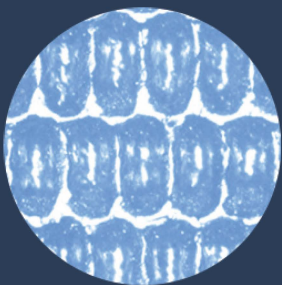


# pamarco **PRODUCTS** 2024



## Laser Engravings

At Pamarco, we have the capability to produce a large range of anilox roll engravings. From laser engraving to mechanical engravings to electro mechanical engravings, we produce the engraving you need to exacting tolerances.



## ThermaFlo<sup>tm</sup>

High-performance 60° engraving with multi-pulse laser technology provides cleaner and sharper highlights, consistent ink transfer, and extended high-definition color gamut performance. Pamarco's multi-pulse engraving technology and mechanical post-engraving film polish provide smooth cell walls and bottoms to help improve ink transfer and doctor blade metering while reducing scoring and premature cell wear.

## EFlo<sup>tm</sup>

Elongated 75° cell geometry enables more efficient ink transfer, cell replenishment and ease of cleaning due to open, flat-bottomed, shallow cells. EFlo offers superior solid ink and coating coverage, especially on porous substrates, and an extended range of graphics that can be printed with one engraving. Ideal for printing combination plates/graphics.

## EZFlo

Channeled 30° laser engraving features excellent release and wettability for high solids inks and coatings. This engraving works great with white water and solvent-based inks, UV inks and coatings and silicone. The vertical channel helps to improve transfer and wettability while also helping to reduce spitting/misting that can occur with UV inks and on high speed presses.

# Mechanical Engravings

## PQCH



Excellent release characteristics, primarily used in gravure coating and laminating applications.

## Pyramid



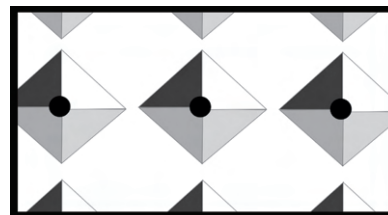
The traditional and original shape for mechanical engravings.

## Pyramid Roto-Flo



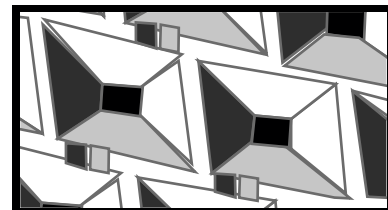
Technically patented by Pamarco. Roto-Flo offers and offset and linked cell structure to promote excellent ink release and eliminates striation

## Quad



Has a flat bottom to help promote good ink release. Used in printing and coating applications.

## Quad Roto-Flo



High Volume and good ink release characteristics, perfect for the corrugated industry.

## Trihelical



Helicoidal engraving used for high viscosity and high volume applications.





## Anilox Cleaning

### EZ-Clean Scrubbers

Our air-powered EZ-Clean Scrubber provides mechanical action necessary for your roll cleaning in a more automated, reduced labor operation. The EZ-Clean Scrubber is designed to be used on and off press to increase productivity and roll life.



### PRS Scrubbers

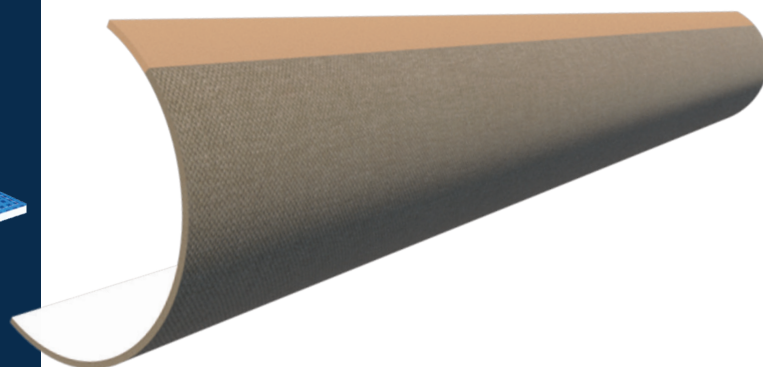
Same great features of the EZ Clean, but utilizing brushes. Each PRS is compatible with your liquid cleaner of choice and removes the dried ink or coating from the anilox or gravure rolls. Stainless steel brushes for ceramic rolls or brass brushes for chrome rolls.



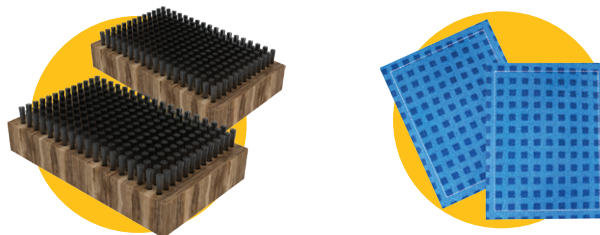
## Anilox Cleaning Plate

### Designed for the Corrugated Industry

The Anilox Roll Cleaning Plate is patented technology used to clean and maintain anilox roll volume on a preventative maintenance schedule or when needed. It is as easy to install as a printing plate and should be used as part of a complete anilox cleaning program.



### CARE® Pads & Brushes







## Anilox Care Products

Pamarco has a full range of anilox care and cleaning chemicals for water-based solvent, and UV inking systems. Cleaning chemicals and products designed so you can maintain consistent volume of your anilox roll, improve print quality, and boost productivity. We work closely with converts to custom tailor cleaning systems, procedures and chemistry to maximize productivity and anilox roll life.

### Water Based Cleaning Products



Clean the inking system including the pump, chamber, and anilox.



A formulated with high-grade surfactants and solvents to quickly remove inks, dirt and grime from the anilox cell.



HD-80's innovative chemistry fuses the properties of a high pH and low pH ink dissolver.



HD-88's innovative chemistry effectively meshes the properties of a high pH and low pH ink dissolver.



Non-flammable and non-corrosive, CARE® Multi-Kleen removes ink, grease and difficult residues. Anti-reposition and soil suspension agents ensure a bright finish.

### Solvent & UV Based Cleaning Products



DeepClean Ultra is a heavy duty flexo/gravure cleaner formulated for the removal of the most challenging of hard dried inks from all types of flexo plates and anilox rollers.



CellRestore is an industrial strength, non-hazardous anilox roll cleaner. It is formulated with high-grade surfactants and solvents to quickly remove inks, dirt and grime from the anilox cell.

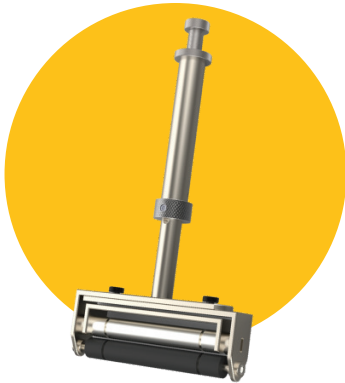


Highly effective paste intended to be applied with a CARE™ pad and left on anilox rolls for up to an hour. Developed for prolonged contact to give deep penetration and maximum cleaning.



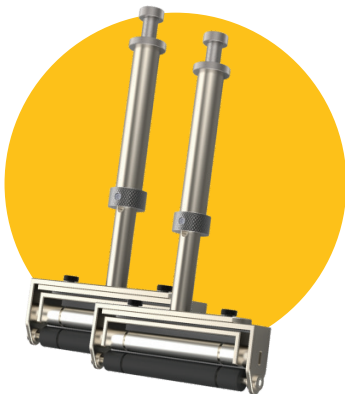
This non-flammable, soft metal safe, non-corrosive cleaner is for the people who don't have the time, budget, or desire to blast their rolls

## Hand Proofers



### Standard Proofer

Our standard proofer utilizes 2 roll construction and is easy to use providing high quality consistent proofs. Pamarco's standard hand proofer is the industry benchmark.



### Quick Change Proofer


Same high performance as the standard proofer, but adds quick anilox changes to fine tune proofs. Eliminates the need for multiple handles.



### Roto Proofer

For our gravure & coating customers who need a direct anilox impression on their wide variety of substrates. Roto Proofer utilizes Doctor Blade metering for consistent proofs.





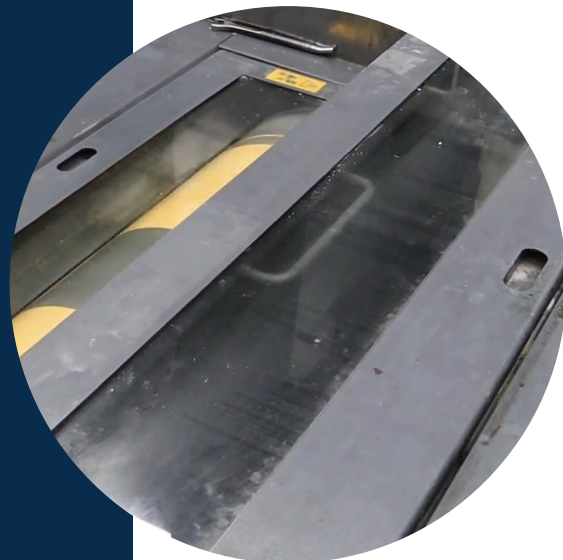
**Utilizing Pamarco's  
well-known hand  
proofers in an  
automatic system  
Iris removes operator  
inconsistencies.**



# Offset

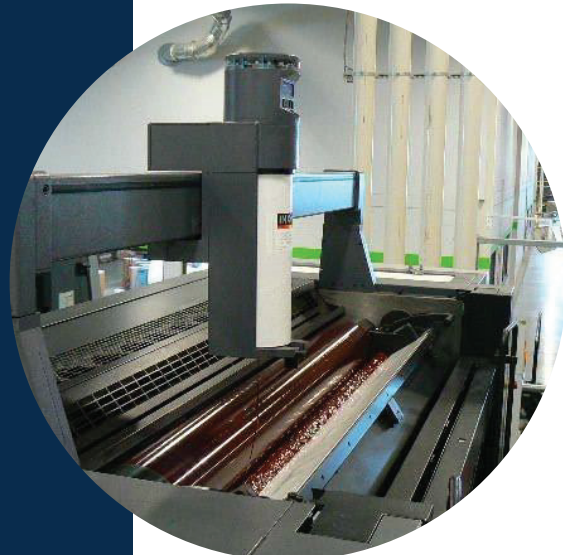
## Anilox Coating

Pamarco services the Offset Industry. These services included anilox coating rolls, cleaning solutions, pressroom chemistry and more.



## Ink Management

Sentinel iPro is the leading cartridge based ink dispensing system. iPro's electronic eye monitors the amount of ink in the fountain, and automatically replaces it just where it is needed. iPro reduces run waste from overfilling, ink spoilage and skinning. Allows faster color change by maintaining a consistent level of ink.







## Press Room Cleaning



DeepClean Ultra is a heavy duty flexo/gravure cleaner formulated for the removal of the most challenging of hard dried inks from all types of flexo plates and anilox rollers.



Highly effective paste intended to be applied with a CARE™ pad and left on anilox rolls for up to an hour. Developed for prolonged contact to give deep penetration and maximum cleaning.



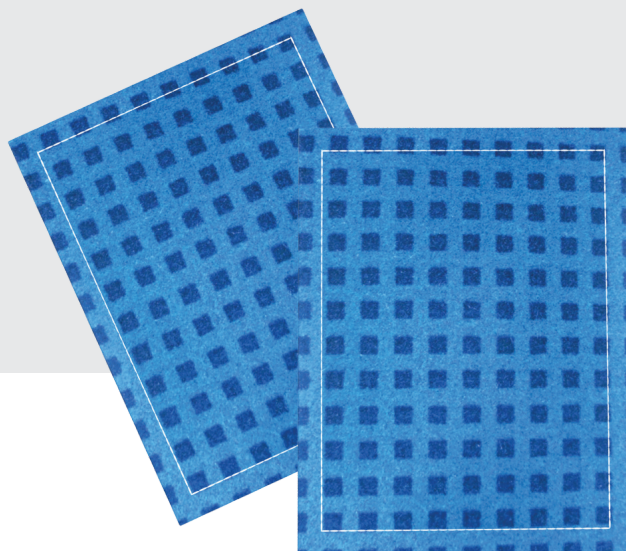
Non-flammable and non-corrosive, CARE® Multi-Kleen removes ink, grease and difficult residues. Anti-reposition and soil suspension agents ensure a bright finish.



CellRestore is an industrial strength, non-hazardous anilox roll cleaner. It is formulated with high-grade surfactants and solvents to quickly remove inks, dirt and grime from the anilox cell.

## New Offset Cleaners

- Restore All Purpose Wash
- Restore UV All Purpose Wash Press Side Wash
- Restore Roller Wash (Auto Wash Approved)
- Restore Calcium Eliminator Roller Rejuvenator
- Restore Universal Plate Cleaner (Conv, UV, LED, HUV)





# Introducing Pamarco's New Ink Destroyer

## Proven Performance, Take The Test.

Start with auditing your press. Then use Ink Destroyer on first down and your standard wash on the second down. Then audit again immediately after cleaning. *Compare the audit results and see the immediate difference.*

**Rapid  
Cleaning  
At Near  
Neutral  
pH**

### Highly Concentrated

- 30 to 1 for standard wash
- 10 to 1 for Cleaning Plate
- 50/50 for plate cleaning and general pressroom.

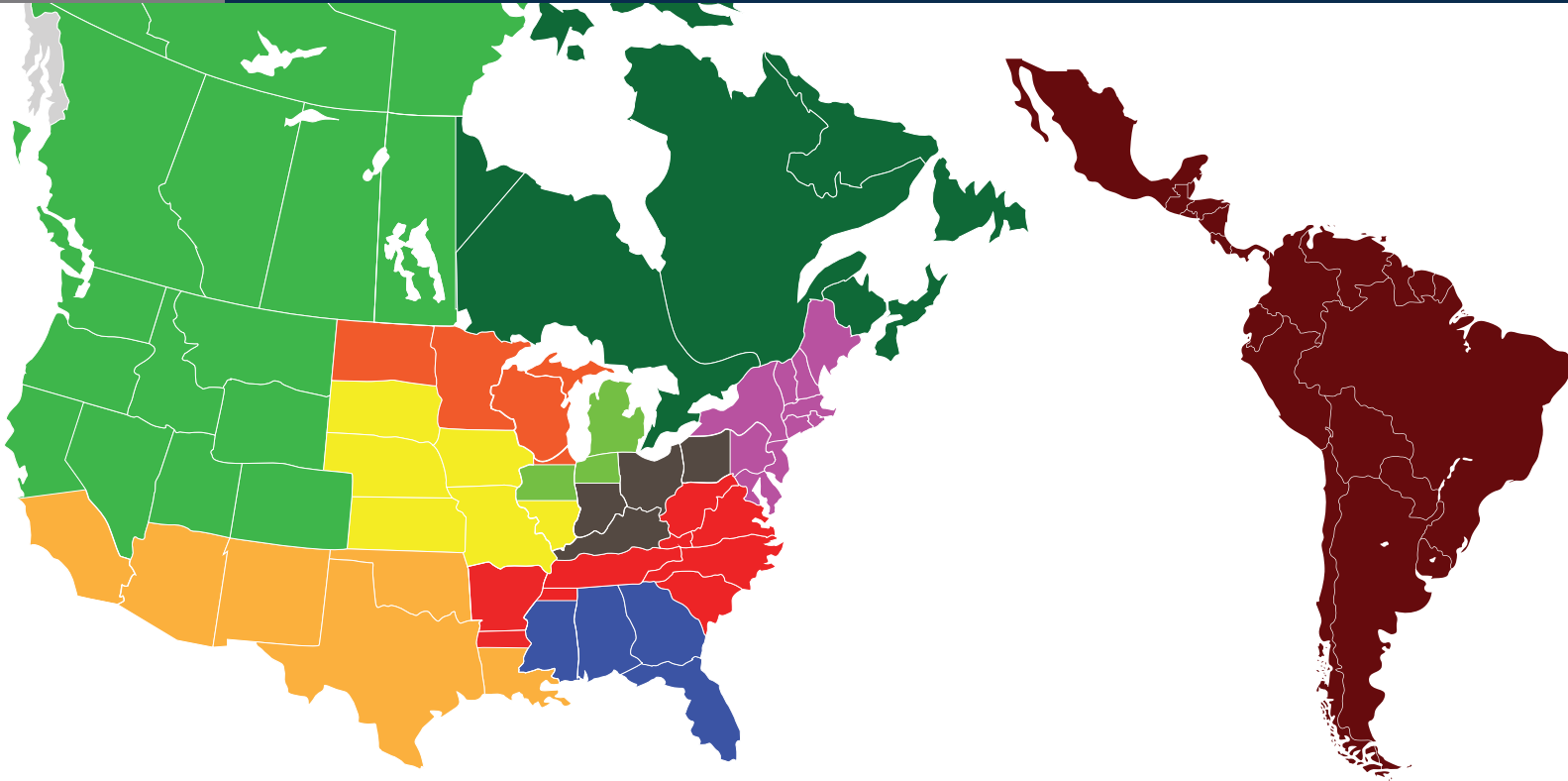
### Unique Blend

Derived from limonene, surfactants and other ecological components.

### Diverse Solution

You can use Ink Destroyer with any wash system. With a pH of 9 you can avoid corrosion, but still quickly get rid of ink on your anilox.





## Know Your Anilox Rep



**James Chesley: 908-265-0441**  
james.chesley@pamarco.com  
Tabatha McDonald: 404-961-6385  
tabatha.mcdonald@pamarco.com



**Colby Edwards: 908-265-0446**  
colby.edwards@pamarco.com  
Tammy Adams: 404-961-6384  
tammy.adams@pamarco.com



**Mikah Thorne: 647-237-6756**  
mikah.thorne@pamarco.com  
Tammy Adams: 404-961-6384  
tammy.adams@pamarco.com



**Frank Greene: 714-393-8450**  
frank.greene@pamarco.com  
Tabatha McDonald: 404-961-6385  
tabatha.mcdonald@pamarco.com



**Mike Poppen: 630-235-4833**  
mike.poppen@pamarco.com Denise  
Harris: 630-879-7303  
denise.harris@pamarco.com



**Mark Graham: 647-267-4860**  
mark.graham@pamarco.com  
Tammy Adams: 404-961-6384  
tammy.adams@pamarco.com



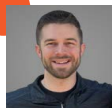
**Hayden Greene: 714-393-1340**  
hayden.greene@pamarco.com  
Tabatha McDonald: 404-961-6385  
tabatha.mcdonald@pamarco.com



**Dave Shumate: 908-265-0450**  
dave.shumate@pamarco.com  
Tammy Adams: 404-961-6384  
tammy.adams@pamarco.com



**Hector Gamboa: 678-713-6451**  
hector.gamboa@pamarco.com  
Daydra Ketchum: 404-961-6377  
daydra.ketchum@pamarco.com



**Ben Hebel: 920-569-9353**  
ben.hebel@pamarco.com  
Denise Harris: 630-879-7303  
denise.harris@pamarco.com



**Shane Weber: 630-235-4836**  
shane.weber@pamarco.com  
Catherine Canene: 630-474-8291  
catherine.canene@pamarco.com



**John Bingham 630-235-4835**  
BFS President - Managing Midwest Sales  
john.bingham@binghamflexoservices.com



**Dan Dietrich: 630-750-6652**  
dan.dietrich@pamarco.com  
Denise Harris: 630-879-7303  
denise.harris@pamarco.com



**Rick Spong: 845-258-0185**  
rick.spong@pamarco.com Daydra  
Ketchum: 404-961-6377  
daydra.ketchum@pamarco.com



**John Rastetter: 856-278-0545**  
john.rastetter@pamarco.com  
VP of Marketing & Sales



Atlanta Office  
500 Wharton Circle SW  
Atlanta, GA 30336  
404-691-1700

Batavia Office  
1475 Nagel Blvd  
Batavia, IL 60510  
630-879-7300

La Palma Office  
6907 Marlin Circle  
La Palma, CA 90623  
714-739-0700



Roselle Office  
235 East 11th Avenue  
Roselle, NJ 07203  
908-241-1200

Walton Office  
12209 Chandler Drive  
Walton, KY 41094  
859-780-0200