



**sentinel**  

---

**ipro**

# INK MANAGEMENT SYSTEM

[pamarco.com/the-sentinel](http://pamarco.com/the-sentinel) | [david.doucette@pamarco.com](mailto:david.doucette@pamarco.com) | 972-839-0347

# WHAT DOES YOUR CURRENT INK DELIVERY SYSTEM COST YOU

## YOUR CURRENT COSTS



### REJECTS/COLOR CONSISTENCY

- Rejects from poor color control
- Rejects from hickeys

Eliminate virtually all rejects from poor color consistency. Sentinel delivers a consistent bead of ink, and eliminates the change in color density, giving you consistency from sheet 1 to 10,000.



### HIGH INK COSTS

- Over filling the fountain
- Skinning
- Waste ink left in the can

Generate savings of up to 25% in your ink costs through reduced wastage. Sentinel leaves less than 2% residual ink in the cartridge.



### REDUCED PRODUCTIVITY

- More residual ink means longer wash up times
- Longer make ready times
- More sheets to come up to color

Significantly reduce your clean up and make ready times, with an overall cleaner press.



### HIGHER LABOR COSTS

- Unnecessary man hours required to maintain the ink in the fountain

Optimize your labor costs. It takes less than 30 seconds to load a Sentinel cartridge, which will then run unmonitored until it needs replacing.



### HIGHER WASTE COSTS

- More residual ink left in the press leads to more clean up, and more waste stream to be disposed of

Reduce your waste disposal costs by up to 85%.

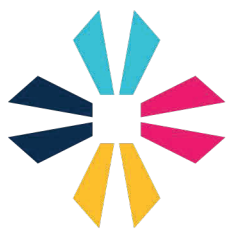
"An ink fountain is still gravity fed. Running with one pound of ink in the fountain and adding three more you will most definitely have color variation. This turns into more waste, downtime, sorting and the possibility of the customer getting inconsistent print quality. Sentinel eliminates this completely." ~M.H. General Converting

"We realized a 20% reduction of ink purchases during the first 6 months of operating Sentinel. We attribute this to it maintaining a smaller amount of ink in the fountain, along with using virtually all the ink in the cartridge." ~B.H. Corporate Visual Communication

"No longer do we have to deal with ink "stringers" on the printing decks. It is also much easier to clean and setup the ink fountains. Our operators really like the ease of use and cleaner procedures for wash-up and setup." ~M.H. West Rock

"Our second pressmen, whose job it is to maintain the ink fountains, had more time to perform tasks in other areas of the press. Our first press operators like that it allows them more time to monitor print quality." ~P.D. Corporate Press

"We saw a significant decrease in waste ink after installing the Sentinels on our presses. In the first three months we went from 3 full 55 gallon drums of waste to less than 1/2 a 55 gallon drum during the same period." ~ J.H. C.V. Packaging



# pamarco



## sentinel

ipro

### Engineered for Performance...

The Sentinel Ink Management System is constructed and tested to provide smooth, trouble-free operation. The Sentinel has been manufactured to withstand the demanding conditions of seven day per week/twenty-four hour per day usage - even when using UV inks and harsh press washes.

- Designed to maximize ink fountain coverage, while integrating visually with existing equipment.
- Sealed linear actuator provides clean, low maintenance environment.
- Flash programmable micro-controller allows updates without changing components in the dispensing head.
- Belt drive with stepper motor ensures years of smooth, trouble free operation.
- Flexible control display can be positioned to face forward, or to either the operator or non-operator side of the press.
- Menu functions are clearly displayed for easy understanding and control.
- High intensity LED low or empty warning lights are visible from any angle.
- Durable extruded cast metal construction.



Accepts the following cartridges



8 Lb.  
Cartridge



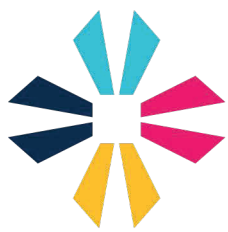
2 Kg.  
Cartridge



RemoteLinc™  
Pumping

 pamarco

[www.pamarco.com/the-sentinel](http://www.pamarco.com/the-sentinel)



# pamarco

## OPTIONAL CENTRAL CONTROL CONSOLE

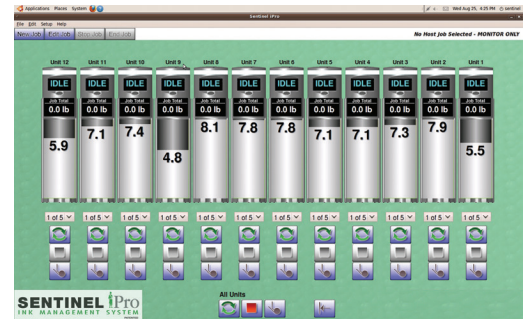
The Central Control Console completes the Sentinel Ink Management package. It provides both function control and monitoring, right at the operator's fingertips.

### FUNCTION & MONITORING FEATURES

- Controls individual or multiple Sentinel unit operation; auto run, stop, and plow (agitate) mode.
- Enables filling of the fountains from the console, and control of the fountain level.
- Precisely tracks both the ink usage and the remaining ink in the cartridge, providing real time information and an end of job report feature.
- Displays cartridge status, including low and empty alerts.

### JOB RECORDING FEATURES

- Job entry fields allow the tracking of each individual job, and saving job totals for future reference.
- Set specific gravity or weight of ink, for exact ink usage on all units.
- Print end of job reports for estimating repeat runs.
- The import/export feature allows this valuable data to be exported into your own ERP system, to better manage and optimize your ink purchases.



## OPTIONAL PLOW / AGITATOR

- For use with heavy bodied or UV inks.
- Eliminates the need for ink agitators.
- Robust design resists flexing.
- Nylon tips prevent damage to the ink blade or ink fountain roller.
- Fully adjustable to fit any ink fountain.



 pamarco

[www.pamarco.com/the-sentinel](http://www.pamarco.com/the-sentinel)

# CONTACT US

## Email

david.doucette@pamarco.com

## Address

3333 Earhart Dr.  
Suite 140  
Carrollton, TX 75006

## Phone

972-839-0347



## ABOUT US



Pamarco began in 1946 when our founders, David Killary and Bill Donohue, created Paper Machinery and Research Corporation. Since that time we've continued to invest and grow into the only full service anilox roll provider with a global presence. Our products and services range from anilox rolls and accessories to cleaning products and roll audits (free of charge!) performed by our experienced sales team. For the past seventy- ve years, we have worked tirelessly to provide innovative solutions that help you stand out. That's just who we are.